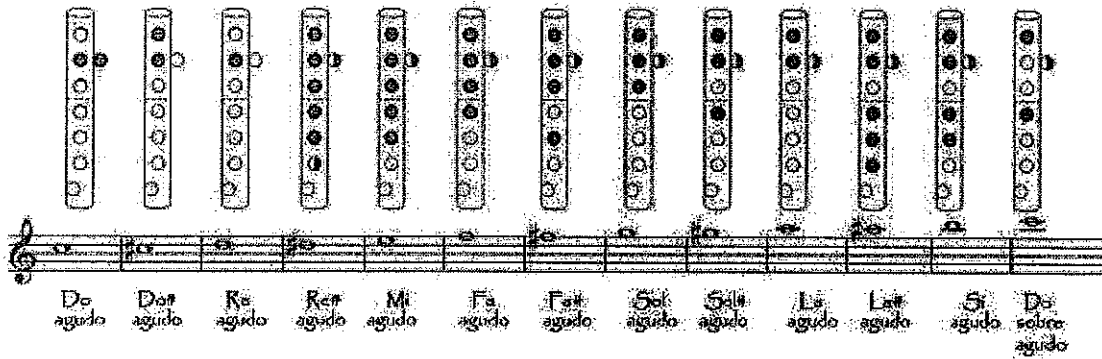
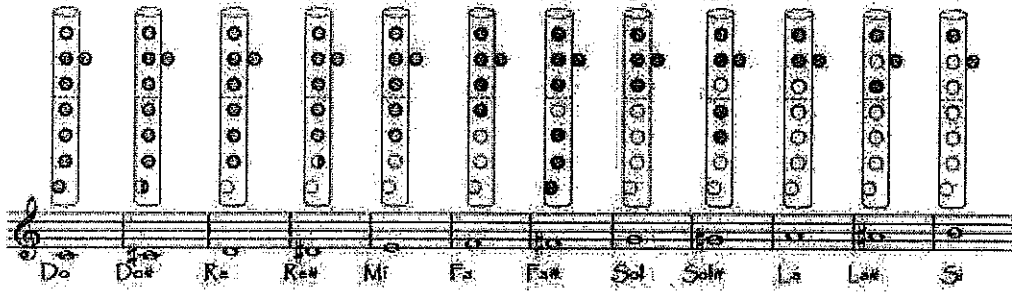


# NOTES ALTERADES EN LA FLAUTA DOLÇA



# DIGITACIÓ ALEMANYA

**Fingering Chart**

○ open hole    ● closed hole    ◐ half hole

|                              |  |
|------------------------------|--|
| (Descant) Soprano*<br>Tenor  |  |
| (Treble) Alto<br>Soprattino* |  |
| Base*                        |  |
| Thumb                        |  |
| LEFT HAND                    |  |
| 1st finger                   |  |
| 2nd finger                   |  |
| 3rd finger                   |  |
| RIGHT HAND                   |  |
| 1st finger                   |  |
| 2nd finger                   |  |
| 3rd finger                   |  |
| 4th finger                   |  |

\* Sounds an octave higher      \*\* Alternate

# "La Primavera"

541

A. Vivaldi

Arreg. Miguel Á. Férrez

Flauta

Pandero

Xilófonos  
Metalófonos

This block contains the first system of the musical score. It features three staves: Flauta (Flute) in the top staff, Pandero (Tambourine) in the middle staff, and Xilófonos/Metalófonos (Xylophone/Metallophone) in the bottom staff. The Flute part begins with a treble clef and a key signature of one sharp (F#), followed by a series of eighth and sixteenth notes. The Tambourine part consists of a simple rhythmic pattern of quarter notes. The Xylophone/Metallophone part provides a harmonic accompaniment with chords.

F.

P.

Xl.  
Mt.

This block contains the second system of the musical score. It features three staves: Flute (F.) in the top staff, Tambourine (P.) in the middle staff, and Xylophone/Metallophone (Xl./Mt.) in the bottom staff. The Flute part continues with a melodic line, marked with a '5' above the first measure. The Tambourine part continues with its rhythmic pattern. The Xylophone/Metallophone part continues with its harmonic accompaniment.

F.

P.

Xl.  
Mt.

This block contains the third system of the musical score. It features three staves: Flute (F.) in the top staff, Tambourine (P.) in the middle staff, and Xylophone/Metallophone (Xl./Mt.) in the bottom staff. The Flute part continues with a melodic line, marked with a '9' above the first measure. The Tambourine part continues with its rhythmic pattern. The Xylophone/Metallophone part continues with its harmonic accompaniment.

# La donna e mobile

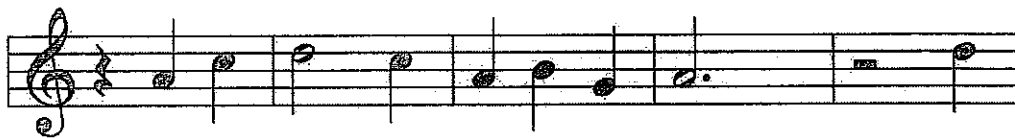


# Indiana Jones

Banda Sonora



# La feria de Scarborough



Flauta 1



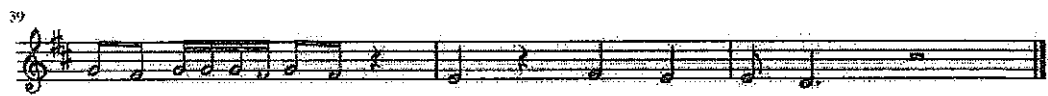
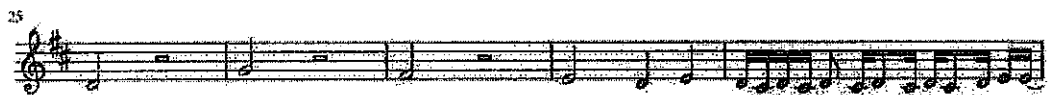
Briks Ender & Luis Fonsi

A musical score for Flauta 1, consisting of ten staves of music. The score is written in treble clef with a key signature of one sharp (F#) and a time signature of 4/4. The music features a mix of eighth and sixteenth notes, with some triplets and complex rhythmic patterns. The staves are numbered 6, 11, 15, 19, 23, 27, 31, 35, and 39. The piece concludes with a double bar line at the end of the tenth staff.

Flauta 2



Erika Ender & Luis Fonsi

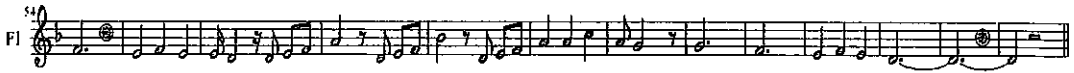
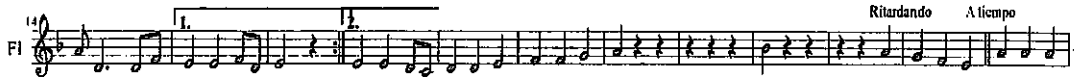


# Piratas del Caribe

Hans Zimmer

BSO

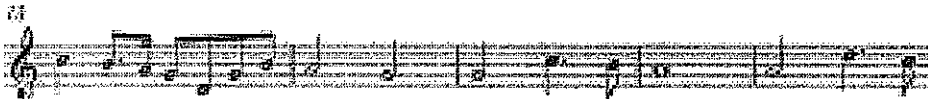
diegosax



diegosax.blogspot.com

# Himno del Barcelona

**Alllegro**



# La Bamba

Tradicional Mexicana

$\text{♩} = 130$

DO

Pa-ra bai-lar Ia bam-

5

ba, pa-ra bai-lar Ia bam- ba, se ne-ce-si-tau-na po-ca de

9

gra-cia. ù-na po-ca de gra-cia pa mi pa ti a Ar-ri-ba ar-ri-

13

ba a ar-ri-ba yar-ri-ba, por ti se-re, por ti se-re.

17

por ti se-re. Yo no soy ma-ri-ne-ro.

21

yo no soy ma-ri-ne-ro, soy ca-pi-tan. soy ca-pi-tan soy ca-pi-tan.

25

Bam- ba- bam- ba bam- ba- bam-

29

ba bam-ba-bam- ba bam-ba.





Cançó de bressol (J. Brahms)

Musical score for 'Cançó de bressol' by J. Brahms, consisting of four staves of music in 3/4 time. The melody is simple and lullaby-like, featuring a mix of quarter and eighth notes.

Antonio Vivaldi

♩ = 104

Flauta

Musical score for a flute piece by Antonio Vivaldi, consisting of four staves of music in 4/4 time. The tempo is marked as quarter note = 104. The piece features a rhythmic pattern of eighth and sixteenth notes. Dynamics include *f* (forte) and *p* (piano).

# Star Wars (Tema Principal)

John Williams

**Allegro**

7

12

18

22